



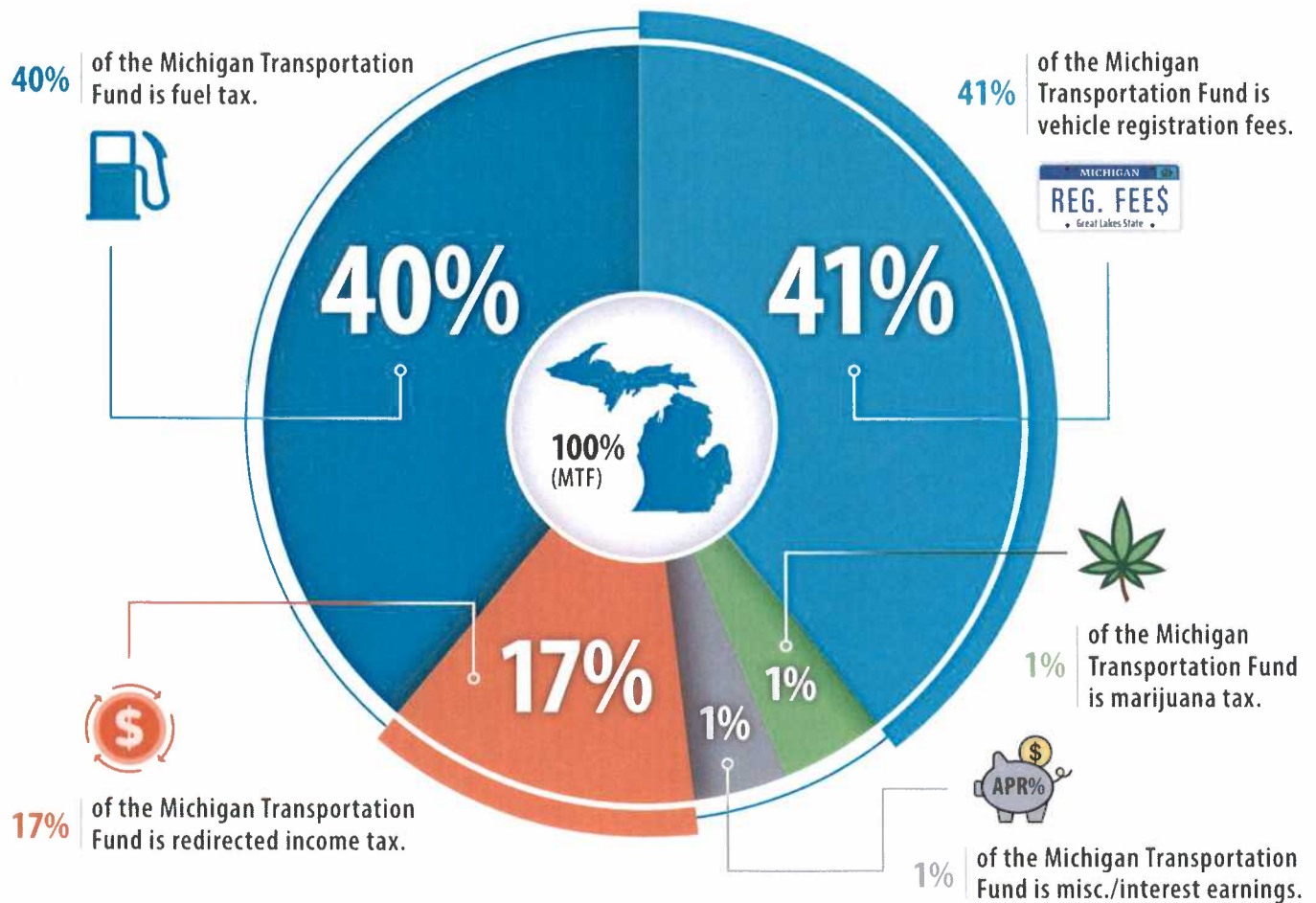
NEW LOCAL ROAD AGENCY GUIDANCE

Michigan Transportation Fund Sources – Not so simple anymore

County road agencies are accustomed to saying **Michigan Transportation Fund (MTF)** dollars are about 50:50 vehicle registration fees and fuel tax. But the times have changed!

With full implementation of the 2015 Transportation Package in FY2021, a new breakout formula should be used.

The new 2021 MTF gross revenue breakdown is 40% fuel tax + 41% vehicle registration fees + 17% redirected income tax + 1% misc./interest earnings + 1% marijuana tax.



For more information contact:

County Road Association of Michigan | 101 S. Washington Square, Suite 200 | Lansing, MI 48893 | 517.482.1189